



A multi stakeholder initiative for Facilitation, Stimulation and Innovation

By Daniel Feypel, Ministry of Foreign Affairs – Development Cooperation

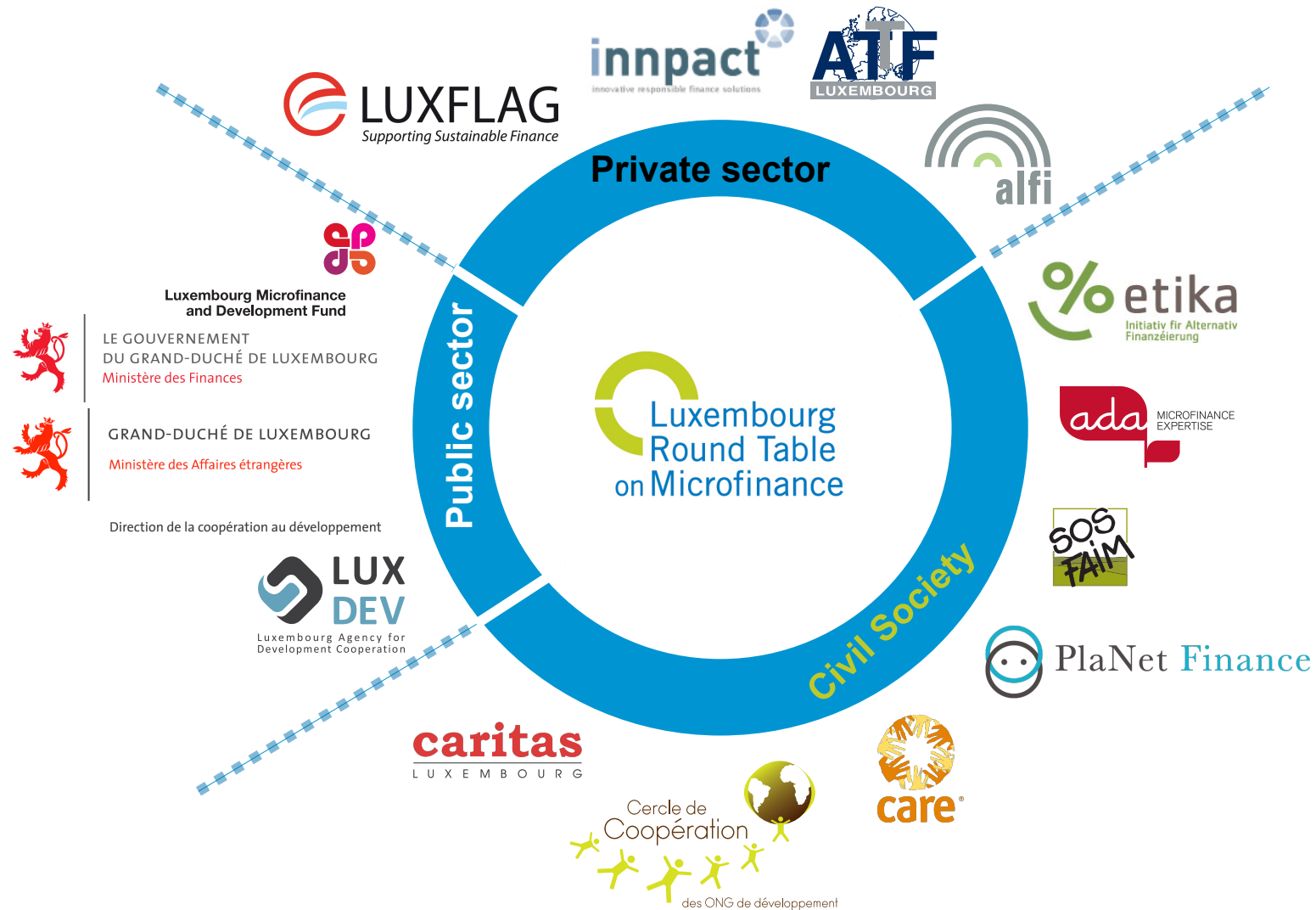
European Microfinance Week - 4th November 2011

History

- 1993: Creation of SOS Faim Luxembourg
- 1994: Creation of Appui au Développement Autonome (ADA)
- 1998: Commercial banks venture into microfinance (Dexia creates an investment fund for microfinance)
- **2003: Creation of the Luxembourg Round Table on Microfinance (LRTM)**
- 2005: First microfinance conference within the UN international year of microcredit
- 2006: Creation of e-MFP



LRTM = Multi stakeholder Format



Structure and Organisation



Missions

- Contribute to the development **of microfinance and inclusive finance** as a set of tools to fight poverty and to support development activities, and as a means to promote **socially responsible investment** opportunities;
- Help **establish and promote Luxembourg** as a centre of excellence in the field of microfinance and inclusive finance in capitalising on its role in **development cooperation** and as a **financial center**;
- Contribute to the **definition of strategies** for microfinance and inclusive finance;
- Contribute to the **creation and management of knowledge** by stimulating, coordinating exchanges between members, for a greater **coherence** of their activities.

Examples of recent subjects presented at LRTM meetings

- “*Competition among Microbanks - Financial and social Trade-Offs*”, by the University of Luxembourg and the University of Cergy Pontoise
- “*Supporting Microfinance Institutions developing energy specific programmes*”, by MicroEnergy International (Germany)
- “*Payment solution with mobile phones in developing countries*”, by Tribalnets (Belgium)
- “*Employee Volunteering Programme*” by Kredietbank Luxembourg
- “*University Meets Microfinance*” (UMM) - Introduction and cooperation possibilities”, by PlaNet Finance
- ...

Website



[Home](#)
[Who we are](#)
[Activities](#)
[Microfinance Funds](#)
[Events](#)
[News](#)
[Library](#)
[Award](#)
[Contact](#)
[Members login](#)

[Home](#) > [Events](#)

NEXT EVENTS

- Wednesday, October 26 2011 : ADA-IFBL Microfinance Training : Investments in Microfinance (EN)**
M2 : MICROFINANCE - INVESTMENTS (8 hours in English)
 - Funding instruments for microfinance institutions
 - Developing microfinance investment vehicles
 - Key steps in creating an investment vehicle and its specificities in microfinance
 - Practical experiences
 - Case studies

⏮
⏪
⏩
⏭




CALENDAR

November 2011
⏮
⏭

17

[Export Agenda](#)

Monday	Tuesday	Wednesday	Thursday	Friday	Saturday	Sunday
	1	2 09:00AM European Microfinance Week	3 09:00AM European Microfinance Week	4 09:00AM European Microfinance Week 09:00AM Risk Management Excellence in Microfinance	5 09:00AM Risk Management Excellence in Microfinance	6 09:00AM Risk Management Excellence in Microfinance
7 09:00AM Risk Management Excellence in Microfinance 08:30AM ADA-IFBL Microfinance Training : Risk management (FR)	8 09:00AM Risk Management Excellence in Microfinance	9 08:30AM ADA-IFBL Microfinance Training : Risk management (EN) 09:00AM Growing by making effective decisions	10 09:00AM Growing by making effective decisions	11 09:00AM Growing by making effective decisions	12 09:00AM Growing by making effective decisions	13
14 09:30AM Global	15 09:30AM Global	16 09:30AM Global	17 09:30AM Global	18	19	20

How to become a member ?

Conditions:

- Corporate bodies only;
- Headquarters in Luxembourg;
- Active in the field of microfinance and inclusive finance, operating from Luxembourg, sharing a strong interest for the sector with the members of the LRTM;
- Adhere to the charter of the LRTM.

Acceptance procedure of a new member:

- Sponsorship (two members): an application is sent to the Secretariat
- Decision by consensus at the next meeting of members

Contact

Secretariat of the LRTM

BP 2273

L-1022 Luxembourg

contact@lrtm.lu

www.lrtm.lu

Thank you for your attention !